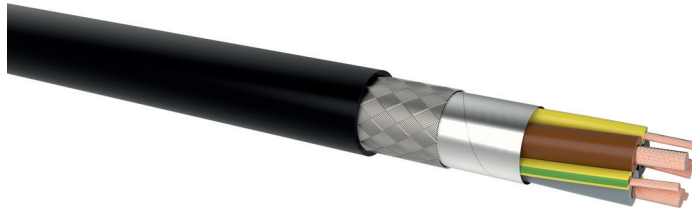


2YSL(St)CY-J 0,6/1 kV EMV-3 PLUS

PE/PVC motor power supply cable, screened

DESIGN



- 1 | Copper conductor, fine wire
- 2 | Core insulation (PE), cores are stranded together with optimal lay-length
- 3 | Screen (plastic laminated aluminium tape and braided with tinned copper wires screen)
- 4 | Sheath (PVC, transparent 2YSL(St)CY-J or black 2YSL(St)CYK-J)

APPLICATION

Double screened 2YSL(St)CY-J cables were designed as supply and connecting cables, for medium mechanical stress, fixed installation and occasionally non-guided movements, in dry, damp and wet rooms. UV-resistant black sheath is designed for outdoor applications. Double screening considerably improves electromagnetic compatibility (EMC) in buildings and plants.

TECHNICAL DATA



Standard:
DIN VDE 0276-603



Rated voltage:
0.6/1 kV (U₀/U)



Test voltage:
4 kV / 50 Hz



Temperature range:
 laying temperature: min. 5 °C
 fixed: -30 °C up to 80 °C
 moved: -5 °C up to 70 °C
 conductor temperature: max. 70 °C
 short circuit temperature: max. 160 °C/5 s



Bending radius (min.):
 5 x Ø of cable (fixed installed)
 15 x Ø of cable (free motion)



Core identification:
HD 308 S2



Fire properties:
 EN 60332-1-2: self-extinguishing and flame retardant
 CPR classification: E_{ca}

Number of cores x nominal cross-section (mm ²)	Max. conductor resistance (Ω/km)	Outer diameter (mm) appr.	Total weight (kg/km) appr.	Standard lengths/packing (m)
2YSL(St)CY-J 0,6/1 kV EMV-3 PLUS				
3 x 1.5 + 3 G 0.25	13.3/79	10.2	212	1000 D
3 x 2.5 + 3 G 0.5	7.98/39	11.8	276	1000 D
3 x 4 + 3 G 0.75	4.95/26	13.4	446	1000 D
3 x 6 + 3 G 1	3.3/19.5	15.3	582	1000 D
3 x 10 + 3 G 1.5	1.91/13.3	18.6	794	1000 D
3 x 16 + 3 G 2.5	1.21/7.98	21.5	1188	1000 D
3 x 25 + 3 G 4	0.78/4.95	25.5	1713	1000 D
3 x 35 + 3 G 6	0.554/3.3	28.3	2402	1000 D
3 x 50 + 3 G 10	0.386/1.91	33.0	2718	1000 D
3 x 70 + 3 G 10	0.272/1.91	37.0	3636	1000 D
3 x 95 + 3 G 16	0.206/1.21	41.0	4978	1000 D
3 x 120 + 3 G 16	0.161/1.21	43.8	5077	1000 D
3 x 150 + 3 G 25	0.129/0.78	53.5	6128	1000 D
3 x 185 + 3 G 35	0.106/0.554	59.5	7450	1000 D
3 x 240 + 3 G 50	0.0801/0.386	70.0	10800	1000 D

Technical changes reserved. All figures are therefore without guarantee.

24.10.2022, 15:35