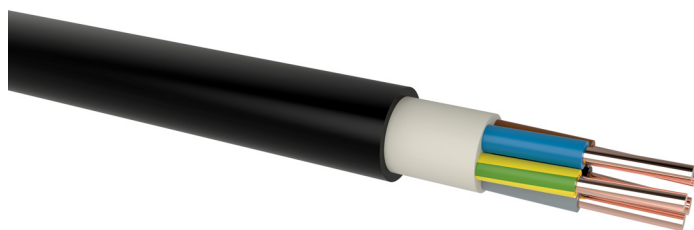


N2XH

XLPE/FRNC energy cable

DESIGN



- 1 | Copper conductor, round solid (RE), round stranded (RM) resp. sector-shaped stranded (SM)
- 2 | Core insulation (XLPE)
- 3 | Inner covering (halogen-free polymer compound)
- 4 | Sheath (halogen-free polymer compound black)

APPLICATION

These cables are intended for the stationary distribution of electrical energy in dry or damp premises and for fixed installations in air or concrete. Suitable to protect people and technical building equipment in the event of fire if circuit integrity is not required. Not allowed for installations underground or in water. The cable is not UV-resistant.

TECHNICAL DATA



Standard:
DIN VDE 0276-604



Rated voltage:
0.6/1 kV (U₀/U)



Test voltage:
4 kV / 50 Hz



Temperature range:
laying temperature: min. -5 °C
operating temperature: -30 °C up to 90 °C
conductor temperature: max. 90 °C
short circuit temperature: max. 250 °C/5 s



Bending radius (min.):
15 x Ø of cable (single core)
12 x Ø of cable (multi core)



Core identification:
HD 308 S2



Fire properties:
EN 60332-1-2: flame retardant
EN 60754-1 and 2: halogen-free; non-corrosive combustion gases
EN 60332-3-22 and 24: reduced flame propagation
EN 61034-2: low smoke emission



Certificate:
VDE Germany

Number of cores x nominal cross-section (mm ²)	Max. conductor resistance (Ω/km)	Current rating in the air (A)	Outer diameter (mm) appr.	Total weight (kg/km) appr.	Standard lengths/packing (m)
N2XH					
2 x 1.5 RE	12.1	28	9.7	180	1000 D
3 x 1.5 RE	12.1	24	10.2	200	500 D, 1000 D
4 x 1.5 RE	12.1	24	10.9	230	500 D, 1000 D
5 x 1.5 RE	12.1	16	11.8	270	500 D, 1000 D
7 x 1.5 RE	12.1	15.5	12.7	310	1000 D
10 x 1.5 RE	12.1	10.5	15.6	358	1000 D
12 x 1.5 RE	12.1	12.5	16.3	460	500 D
14 x 1.5 RE	12.1	24	17.0	540	500 D
19 x 1.5 RE	12.1	10.5	19.0	650	500 D
24 x 1.5 RE	12.1	9.5	22.0	760	500 D
30 x 1.5 RE	12.1	9	23.2	900	500 D
40 x 1.5 RE	12.1	8	26.0	1200	500 D
2 x 2.5 RE	7.41	37	10.5	210	500 D, 1000 D

N2XH

XLPE/FRNC energy cable

Number of cores x nominal cross-section (mm ²)	Max. conductor resistance (Ω/km)	Current rating in the air (A)	Outer diameter (mm) appr.	Total weight (kg/km) appr.	Standard lengths/packing (m)
N2XH					
3 x 2.5 RE	7.41	32	11.1	250	500 D, 1000 D
4 x 2.5 RE	7.41	32	11.9	290	500 D, 1000 D
5 x 2.5 RE	7.41	22	13.1	340	500 D, 1000 D
7 x 2.5 RE	7.41	20.5	14.1	400	1000 D
10 x 2.5 RE	7.41	18	17.1	540	1000 D
12 x 2.5 RE	7.41	16.5	18.0	600	500 D
14 x 2.5 RE	7.41	14	20.0	670	500 D
19 x 2.5 RE	7.41	14	21.0	840	500 D
24 x 2.5 RE	7.41	12.5	24.0	1050	500 D
30 x 2.5 RE	7.41	12	25.9	1230	500 D
40 x 2.5 RE	7.41	11	29.2	1820	500 D
1 x 4 RE	4.61	44	9.0	140	1000 D
2 x 4 RE	4.61	49	11.5	270	1000 D
3 x 4 RE	4.61	42	12.1	330	1000 D
4 x 4 RE	4.61	42	13.2	380	1000 D
5 x 4 RE	4.61	28	14.3	450	1000 D
7 x 4 RE	4.61	27	15.5	620	500 D
12 x 4 RE	4.61	42	21.0	820	500 D
2 x 6 RE	3.08	62	12.5	340	500 D
3 x 6 RE	3.08	53	13.4	410	500 D
4 x 6 RE	3.08	53	14.4	490	500 D
5 x 6 RE	3.08	36	15.7	560	500 D
7 x 6 RE	3.08	28	16.6	587	500 D
2 x 10 RE	1.83	85	14.2	450	500 D
3 x 10 RE	1.83	74	15.0	550	500 D
4 x 10 RE	1.83	74	16.3	670	500 D
5 x 10 RE	1.83	49	17.8	790	500 D
7 x 10 RE	1.83		19.5	937	500 D
1 x 16 RE	1.15	131	11.4	230	500 D, 1000 D
1 x 16 RM	1.15	131	11.6	235	500 D, 1000 D
2 x 16 RE	1.15	113	16.6	635	500 D
3 x 16 RE	1.15	98	17.1	671	500 D
3 x 16 RM	1.15	98	17.6	750	500 D
4 x 16 RE	1.15	98	18.9	843	500 D
4 x 16 RM	1.15	98	19.4	960	500 D
5 x 16 RE	1.15	65	21.4	1052	500 D
5 x 16 RM	1.15	65	21.2	1085	500 D
1 x 25 RM	0.727	177	13.5	345	500 D, 1000 D
3 x 25 RM	0.727	133	21.4	1200	500 D, 1000 D
3 x 25 + 16 RM/RE	0.727/1.15	133	23.6	1360	500 D

N2XH

XLPE/FRNC energy cable

Number of cores x nominal cross-section (mm ²)	Max. conductor resistance (Ω/km)	Current rating in the air (A)	Outer diameter (mm) appr.	Total weight (kg/km) appr.	Standard lengths/packing (m)
N2XH					
4 x 25 RM	0.727	133	23.6	1450	500 D, 1000 D
5 x 25 RM	0.727	133	25.9	1694	500 D, 1000 D
1 x 35 RM	0.524	217	14.7	445	500 D, 1000 D
3 x 35 RM	0.524	162	24.3	1600	500 D
3 x 35 + 16 RM/RE	0.524/1.15	162	26.7	1715	500 D
3 x 35 + 16 SM/RE	0.524/1.15	162	25.5	1640	500 D
3 x 35 + 16 SM/RM	0.524/1.15	162	24.6	1640	500 D
4 x 35 SM	0.524	162	24.6	1850	500 D, 1000 D
5 x 35 RM	0.524	162	29.4	2132	500 D, 1000 D
1 x 50 RM	0.387	265	15.0	600	500 D, 1000 D
3 x 50 RM	0.387	197	27.3	1800	500 D
3 x 50 + 25 RM/RM	0.387/0.727	197	28.0	2050	500 D
3 x 50 + 25 SM/RM	0.387/0.727	197	27.6	2170	500 D
4 x 50 SM	0.387	197	27.6	2410	500 D, 1000 D
5 x 50 RM	0.387	197	35.0	2569	500 D, 1000 D
1 x 70 RM	0.268	336	17.9	810	500 D, 1000 D
3 x 70 RM	0.268	250	31.6	2550	500 D, 1000 D
3 x 70 + 35 SM/RM	0.268/0.524	250	31.9	2960	500 D
3 x 70 + 35 SM/SM	0.268/0.524	250	33.7	2760	500 D
4 x 70 SM	0.268	250	31.9	3340	500 D
5 x 70 RM	0.268	246	47.0	5400	500 D
1 x 95 RM	0.193	415	19.8	1070	500 D, 1000 D
3 x 95 + 50 SM/RM	0.193/0.387	308	35.8	3840	500 D
4 x 95 RM	0.193	298	40.6	3960	500 D
4 x 95 SM	0.193	308	35.8	4380	500 D
5 x 95 SM	0.193	308	40.8	4990	500 D
1 x 120 RM	0.153	485	21.5	1330	500 D, 1000 D
3 x 120 + 70 RM/RM	0.153/0.268	346	45.4	5160	500 D
3 x 120 + 70 SM/RM	0.153/0.268	359	39.7	4790	500 D
3 x 120 + 70 SM/SM	0.153/0.268	359	39.0	4750	500 D
4 x 120 SM	0.153	359	39.7	5420	500 D
5 x 120 RM	0.153	359	48.0	6774	500 D
5 x 120 SM	0.153	359	51.3	6212	500 D
1 x 150 RM	0.124	557	23.1	1620	500 D, 1000 D
3 x 150 RM	0.124	412	43.0	5180	300 D
3 x 150 + 70 SM/RM	0.124/0.268	412	44.3	5840	300 D
3 x 150 + 70 SM/SM	0.124/0.268	412	43.3	5810	300 D

N2XH

XLPE/FRNC energy cable

Number of cores x nominal cross-section (mm ²)	Max. conductor resistance (Ω/km)	Current rating in the air (A)	Outer diameter (mm) appr.	Total weight (kg/km) appr.	Standard lengths/ packing (m)
N2XH					
3 x 150 + 95 SM/ RM	0.124/0.193	412	44.3	5980	300 D
4 x 150 RM	0.124	412	49.5	6150	300 D
4 x 150 SM	0.124	412	44.3	6690	300 D
1 x 185 RM	0.0991	646	25.7	1990	300 D
3 x 185 + 95 RM/ RM	0.0991/0.193	450	54.4	7780	300 D
3 x 185 + 95 SM/ RM	0.0991/0.193	475	48.9	7020	300 D
3 x 185 + 95 SM/ SM	0.0991/0.193	475	47.1	6980	300 D
4 x 185 RM	0.0991	475	54.4	7780	300 D
4 x 185 SM	0.0991	475	48.9	8270	500 D
1 x 240 RM	0.0754	774	28.3	2570	500 D, 1000 D
3 x 240 + 120 RM/ RM	0.0754/0.153	538	61.5	9550	300 D
3 x 240 + 120 SM/ RM	0.0754/0.153	564	55.3	9240	300 D
3 x 240 + 120 SM/ SM	0.0754/0.153	564	52.6	9190	300 D
4 x 240 SM	0.0754	564	55.3	11110	300 D
1 x 300 RM	0.0601	901	31.4	3180	500 D, 1000 D
1 x 400 RM	0.047	1060	35.2	4160	500 D, 1000 D
1 x 500 RM	0.037	1252	38.4	5130	500 D, 1000 D

Technical changes reserved. All figures are therefore without guarantee.

18.8.2022, 14:14