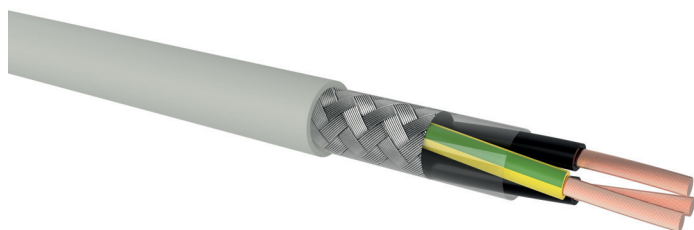


## HSLCH-JZ or -OZ

Control cable, halogen-free, screened

### DESIGN



- 1 | Copper conductor, fine wire
- 2 | Core insulation (FRNC), cores stranded in layers
- 3 | Inner covering (halogen-free plastic tape)
- 4 | Screen (braided screen, tinned copper wires)
- 5 | Sheath (FRNC grey RAL 7001, oil resistant)

### APPLICATION

As flexible control and connecting cable for fixed laying and flexible applications without tensile stress and/or without guided movements, especially for the protection of human life and valuable equipment.

### TECHNICAL DATA



**Rated voltage:**  
300/500 V (U<sub>0</sub>/U)



**Test voltage:**  
2 kV / 50 Hz



**Temperature range:**  
 laying temperature: min. -5 °C  
 fixed: -40 °C up to 70 °C  
 moved: -5 °C up to 70 °C  
 conductor temperature: max. 70 °C  
 short circuit temperature: max. 150 °C/5 s



**Bending radius (min.):**  
 4 x Ø of cable (fixed installed)  
 15 x Ø of cable (free motion)



**Core identification:**  
 black with number printing, with one core green-yellow (JZ), without (OZ)



**Fire properties:**  
 EN 60332-1-2: flame retardant  
 EN 60754-1 and 2: halogen-free; non-corrosive combustion gases  
 EN 61034-2: low smoke emission  
 EN 60332-3-22 and 24: reduced flame propagation

Number of cores x nominal cross-section (mm <sup>2</sup> )	Max. conductor resistance (Ω/km)	Outer diameter (mm) appr.	Total weight (kg/km) appr.	Standard lengths/packing (m)
<b>HSLCH-JZ or -OZ</b>				
2 x 0.75	26	5.8	49	500 Sp, 1000 Sp
3 x 0.75	26	7.0	63	500 Sp, 1000 Sp
4 x 0.75	26	7.5	77	500 Sp, 1000 Sp
5 x 0.75	26	7.2	87	500 Sp, 1000 Sp
7 x 0.75	26	7.9	110	500 Sp, 1000 Sp
12 x 0.75	26	11.4	187	500 Sp, 1000 Sp
25 x 0.75	26	16.0	397	500 D, 1000 D
2 x 1	19.5	8.7	130	500 Sp, 1000 Sp
3 x 1	19.5	6.6	70	500 Sp, 1000 Sp
4 x 1	19.5	7.2	85	500 Sp, 1000 Sp
5 x 1	19.5	8.7	111	500 Sp, 1000 Sp
7 x 1	19.5	8.7	130	500 Sp, 1000 Sp
12 x 1	19.5	11.3	215	500 Sp, 1000 Sp
18 x 1	19.5	13.5	315	500 D, 1000 D
25 x 1	19.5	17.7	464	500 D, 1000 D
2 x 1.5	13.3	6.7	67	500 Sp, 1000 Sp
3 x 1.5	13.3	7.0	85	500 Sp, 1000 Sp
4 x 1.5	13.3	7.9	106	500 Sp, 1000 Sp
5 x 1.5	13.3	8.6	130	500 Sp, 1000 Sp

## HSLCH-JZ or -OZ

Control cable, halogen-free, screened

Number of cores x nominal cross-section (mm <sup>2</sup> )	Max. conductor resistance (Ω/km)	Outer diameter (mm) appr.	Total weight (kg/km) appr.	Standard lengths/ packing (m)
<b>HSLCH-JZ or -OZ</b>				
7 x 1.5	13.3	9.2	165	500 Sp, 1000 Sp
18 x 1.5	13.3	14.5	395	500 D, 1000 D
25 x 1.5	13.3	21.0	678	500 D, 1000 D
2 x 2.5	7.98	9.7	123	500 Sp, 1000 Sp
3 x 2.5	7.98	8.4	125	500 Sp, 1000 Sp
4 x 2.5	7.98	11.1	188	500 Sp, 1000 Sp
5 x 2.5	7.98	10.1	190	500 Sp, 1000 Sp
7 x 2.5	7.98	11.0	245	500 Sp, 1000 Sp
12 x 2.5	7.98	18.2	796	500 D, 1000 D
3 x 4	4.95	9.9	175	500 Sp, 1000 Sp
4 x 4	4.95	10.8	220	500 Sp, 1000 Sp
5 x 4	4.95	11.7	270	500 Sp, 1000 Sp
3 x 6	3.3	12.5	365	500 Sp, 1000 Sp
4 x 10	1.91	16.3	523	500 D, 1000 D
4 x 16	1.15	19.2	769	500 D, 1000 D

Technical changes reserved. All figures are therefore without guarantee.

18.8.2022, 13:45