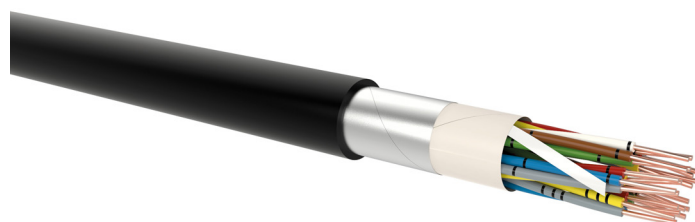


A-2Y(L)2Y...St III Bd

Telecommunication underground cable, screened

DESIGN



- 1 | Copper conductor, round solid (RE)
- 2 | Core insulation (PE), cores star quaded and quads stranded in groups
- 3 | Inner covering (plastic foil)
- 4 | Screen (copolymer laminated aluminium tape which is welded to the PE sheath)
- 5 | Sheath (HDPE black, UV-resistant)

APPLICATION

Underground cable for use in telecommunications installations and related installations. Suitable for installation under ground, in cable ducts etc.

TECHNICAL DATA



Standard:
DIN VDE 0816



Rated voltage:
225 V_{eff} (peak value)



Test voltage:
500 V (core/core) / 50 Hz
2 kV (core/screen) / 50 Hz



Temperature range:
laying temperature: min. -20 °C
fixed: -20 °C up to 70 °C
moved: -20 °C up to 50 °C



Bending radius (min.):
10 x Ø of cable



Core identification:
DIN VDE 0816



Fire properties:
CPR classification: F_{ca}



Certificate:
VDE Germany

ELECTRICAL PARAMETERS

Parameter	Unit	0.6	0.8
Conductor diameter	(mm)	0.6	0.8
Loop resistance, max.	(Ω/km)	130	73.2
Mutual capacitance, max. at 800 Hz (100 % of values)	(nF/km)	52	55
Capacitance unbalance K ₁ , max. at 800 Hz (98% of values)	(pF/300m)	400	400
Capacitance unbalance K1, max. at 800 Hz (100% of values)	(pF/300m)	800	800
Capacitance unbalance K ₉ -K ₁₂ , max. at 800 Hz (98% of values)	(pF/300m)	100	100
Capacitance unbalance K ₉ -K ₁₂ , max. at 800 Hz (100% of values)	(pF/300m)	300	300
Capacitance unbalance E ₁ -E ₂ , max. at 800 Hz	(pF/300m)	800	800

Number of pairs x nominal diameter (mm)	Outer diameter (mm) appr.	Total weight (kg/km) appr.	Standard lengths/packing (m)
A-2Y(L)2Y...St III Bd			
2 x 2 x 0.6	9.0	80	500 D, 1000 D
6 x 2 x 0.6	10.2	106	500 D, 1000 D

A-2Y(L)2Y...St III Bd

Telecommunication underground cable, screened

Number of pairs x nominal diameter (mm)	Outer diameter (mm) appr.	Total weight (kg/km) appr.	Standard lengths/packing (m)
A-2Y(L)2Y...St III Bd			
10 x 2 x 0.6	11.7	143	500 D, 1000 D
20 x 2 x 0.6	15.0	233	500 D, 1000 D
30 x 2 x 0.6	16.5	311	500 D, 1000 D
40 x 2 x 0.6	17.5	390	500 D, 1000 D
50 x 2 x 0.6	19.6	459	500 D, 1000 D
70 x 2 x 0.6	20.5	594	500 D, 1000 D
100 x 2 x 0.6	25.0	828	500 D, 1000 D
150 x 2 x 0.6	31.0	1230	500 D, 1000 D
200 x 2 x 0.6	34.5	1587	500 D, 1000 D
2 x 2 x 0.8	9.5	82	500 D, 1000 D
4 x 2 x 0.8	11.0	116	500 D, 1000 D
6 x 2 x 0.8	11.5	144	500 D, 1000 D
20 x 2 x 0.8	17.5	344	500 D, 1000 D
30 x 2 x 0.8	20.0	464	1000 D
40 x 2 x 0.8	22.0	603	1000 D
50 x 2 x 0.8	23.5	723	1000 D
70 x 2 x 0.8	27.0	963	1000 D
100 x 2 x 0.8	27.0	1341	1000 D
150 x 2 x 0.8	47.0	2935	1000 D
200 x 2 x 0.8	42.4	2572	1000 D

Technical changes reserved. All figures are therefore without guarantee.

29.8.2022, 14:39