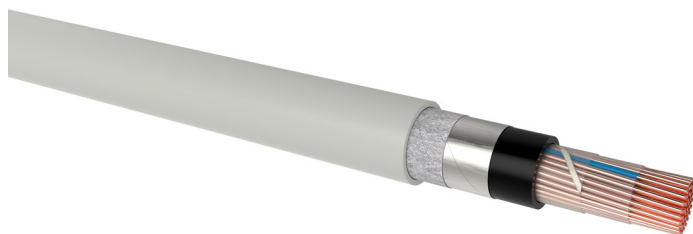


## S-2Y2YBY single core

Railway signalling cable, unscreened, armoured

### DESIGN



- 1 | Copper conductor, round solid (RE)
- 2 | Core insulation (PE), cores stranded in layers
- 3 | Inner covering (plastic foil)
- 4 | Inner sheath (PE black)
- 5 | Armouring (bare steel tape, wrapped with plastic tape)
- 6 | Oversheath (PVC grey RAL 7035)

### APPLICATION

Safety and control cable for fixed installation in railway installations. The cables must be protected from the constant influence of sunlight.

### TECHNICAL DATA



**Standard:**  
ÖVE-K 11



**Operating voltage:**  
max. 400 Veff (0.75 mm<sup>2</sup>)  
max. 800 Veff (≥ 0.75 mm<sup>2</sup>)



**Test voltage:**  
2500 Veff (0.75 mm<sup>2</sup>) / 50 Hz  
3500 Veff (≥ 0.75 mm<sup>2</sup>) / 50 Hz



**Temperature range:**  
laying temperature: min. -5 °C  
operating temperature: -30 °C up to 60 °C  
conductor temperature: max. 80 °C



**Bending radius (min.):**  
12 x Ø of cable



**Core identification:**  
Colour code with trace quad in each layer



**Fire properties:**  
EN 60332-1-2: flame retardant  
CPR classification: E<sub>ca</sub>

### ELECTRICAL PARAMETERS

	(mm <sup>2</sup> )	0.75	1.5	2.5	4	6
Nominal cross-section						
Loop resistance, max.	(Ω/km)	24.5	12.1	7.3	4.6	3
Insulation resistance, min. at 20 °C	(MΩ.km)	5000	5000	5000	5000	5000
Mutual capacitance, max. at 800 Hz	(nF/km)	100	120	120	120	120

Number of cores x nominal cross-section (mm <sup>2</sup> )	Outer diameter (mm) appr.	Total weight (kg/km) appr.	Standard lengths/packing (m)
<b>S-2Y2YBY single core</b>			
5 x 0.75	12.6	247	1000 D
10 x 0.75	15.1	335	1000 D
15 x 0.75	16.5	400	1000 D
20 x 0.75	18.1	468	1000 D
30 x 0.75	20.4	582	1000 D
40 x 0.75	22.1	687	1000 D
60 x 0.75	26.4	972	1000 D
80 x 0.75	29.6	1209	1000 D
100 x 0.75	31.9	1404	1000 D
5 x 1.5	14.2	294	1000 D
10 x 1.5	17.5	429	1000 D
15 x 1.5	18.9	557	1000 D
20 x 1.5	20.6	666	1000 D

## S-2Y2YBY single core

Railway signalling cable, unscreened, armoured

Number of cores x nominal cross-section (mm <sup>2</sup> )	Outer diameter (mm) appr.	Total weight (kg/km) appr.	Standard lengths/packing (m)
<b>S-2Y2YBY single core</b>			
30 x 1.5	24.3	895	1000 D
40 x 1.5	26.7	1107	1000 D
60 x 1.5	31.2	1548	1000 D
80 x 1.5	34.6	1939	1000 D
100 x 1.5	38.5	2340	1000 D
5 x 2.5	15.2	393	1000 D
10 x 2.5	19.6	605	1000 D
15 x 2.5	21.7	777	1000 D
20 x 2.5	24.4	940	1000 D
30 x 2.5	28.4	1276	1000 D
40 x 2.5	31.2	1634	1000 D
60 x 2.5	38.1	2419	1000 D
80 x 2.5	41.9	2968	1000 D
100 x 2.5	47.9	3550	1000 D
5 x 4	18.2	531	1000 D
10 x 4	22.8	825	1000 D
15 x 4	26.2	1123	1000 D
20 x 4	28.8	1451	1000 D
30 x 4	33.4	1959	1000 D
40 x 4	37.7	2855	1000 D
60 x 4	45.7	3620	1000 D
80 x 4	50.2	4664	1000 D
5 x 6	19.4	635	1000 D
10 x 6	24.7	1209	1000 D
24 x 6	35.0	2253	1000 D

Technical changes reserved. All figures are therefore without guarantee.

16.8.2022, 12:04