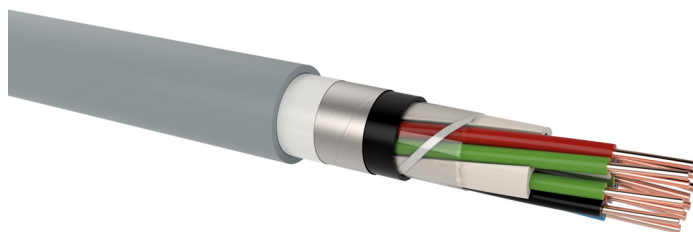


## S-2Y2YBY quad

Railway signalling cable, unscreened, armoured

### DESIGN



- 1 | Copper conductor, round solid (RE)
- 2 | Core insulation (PE), cores star quaded and quads stranded in layers
- 3 | Inner covering (plastic foil)
- 4 | Inner sheath (PE black)
- 5 | Armouring (bare steel tape, wrapped with plastic tape)
- 6 | Oversheath (PVC grey RAL 7035)

### APPLICATION

Safety and control cable for fixed installation in railway installations. The cables must be protected from the constant influence of sunlight.

### TECHNICAL DATA



**Standard:**  
ÖVE-K 11



**Operating voltage:**  
max. 250 V



**Test voltage:**  
2500 V<sub>eff</sub> / 50 Hz



**Temperature range:**  
laying temperature: min. -5 °C  
operating temperature: -30 °C up to 60 °C  
conductor temperature: max. 80 °C



**Bending radius (min.):**  
12 x Ø of cable



**Core identification:**  
Colour code with trace quad in each layer



**Fire properties:**  
EN 60332-1-2: flame retardant  
CPR classification: E<sub>ca</sub>

### ELECTRICAL PARAMETERS

	(mm)	0.8	0.9	1.4
Conductor diameter	(mm)	0.8	0.9	1.4
Loop resistance, max.	(Ω/km)	73.2	56.6	23.4
Insulation resistance, min. at 20 °C	(MΩ.km)	10000	10000	10000
Mutual capacitance, max. at 800 Hz (75% of values)	(nF/km)	38	38	38
Mutual capacitance, max. at 800 Hz (90 % of values)	(nF/km)	40	40	40
Mutual capacitance, max. at 800 Hz (100 % of values)	(nF/km)	42	42	42
Capacitance unbalance K <sub>1</sub> , max. at 800 Hz (100% of values)	(pF/425m)	185	185	185
Capacitance unbalance K <sub>9</sub> -K <sub>12</sub> , max. at 800 Hz	(pF/425m)	170	170	170
Capacitance unbalance E <sub>1</sub> -E <sub>2</sub> , max. at 800 Hz	(pF/425m)	550	550	550

Number of quads x conductor diameter (mm)	Outer diameter (mm) appr.	Total weight (kg/km) appr.	Standard lengths/packing (m)
<b>S-2Y2YBY quad</b>			
1 x 4 x 0.8	12.3	210	1000 D
2 x 4 x 0.8	17.3	294	1000 D
3 x 4 x 0.8	18.4	353	1000 D
5 x 4 x 0.8	20.6	469	1000 D

## S-2Y2YBY quad

Railway signalling cable, unscreened, armoured

Number of quads x conductor diameter (mm)	Outer diameter (mm) appr.	Total weight (kg/km) appr.	Standard lengths/packing (m)
<b>S-2Y2YBY quad</b>			
7 x 4 x 0.8	21.0	546	500 D, 1000 D
10 x 4 x 0.8	25.5	754	500 D, 1000 D
15 x 4 x 0.8	29.0	979	500 D, 1000 D
20 x 4 x 0.8	32.1	1182	500 D, 1000 D
25 x 4 x 0.8	35.6	1435	500 D, 1000 D
1 x 4 x 0.9	14.0	244	500 D, 1000 D
2 x 4 x 0.9	18.0	337	500 D, 1000 D
3 x 4 x 0.9	18.2	403	500 D, 1000 D
5 x 4 x 0.9	21.0	573	500 D, 1000 D
7 x 4 x 0.9	23.2	670	500 D, 1000 D
10 x 4 x 0.9	27.2	881	500 D, 1000 D
15 x 4 x 0.9	31.1	1151	500 D, 1000 D
20 x 4 x 0.9	35.3	1449	500 D, 1000 D
25 x 4 x 0.9	38.7	1696	500 D, 1000 D
1 x 4 x 1.4	15.7	331	500 D, 1000 D
2 x 4 x 1.4	24.5	608	500 D, 1000 D
3 x 4 x 1.4	25.3	698	500 D, 1000 D
5 x 4 x 1.4	29.5	977	500 D, 1000 D
7 x 4 x 1.4	32.6	1181	500 D, 1000 D
10 x 4 x 1.4	39.3	1639	500 D, 1000 D
15 x 4 x 1.4	46.5	2195	500 D, 1000 D
20 x 4 x 1.4	52.5	2816	500 D, 1000 D
25 x 4 x 1.4	57.8	3414	500 D, 1000 D

Technical changes reserved. All figures are therefore without guarantee.

16.8.2022, 11:54