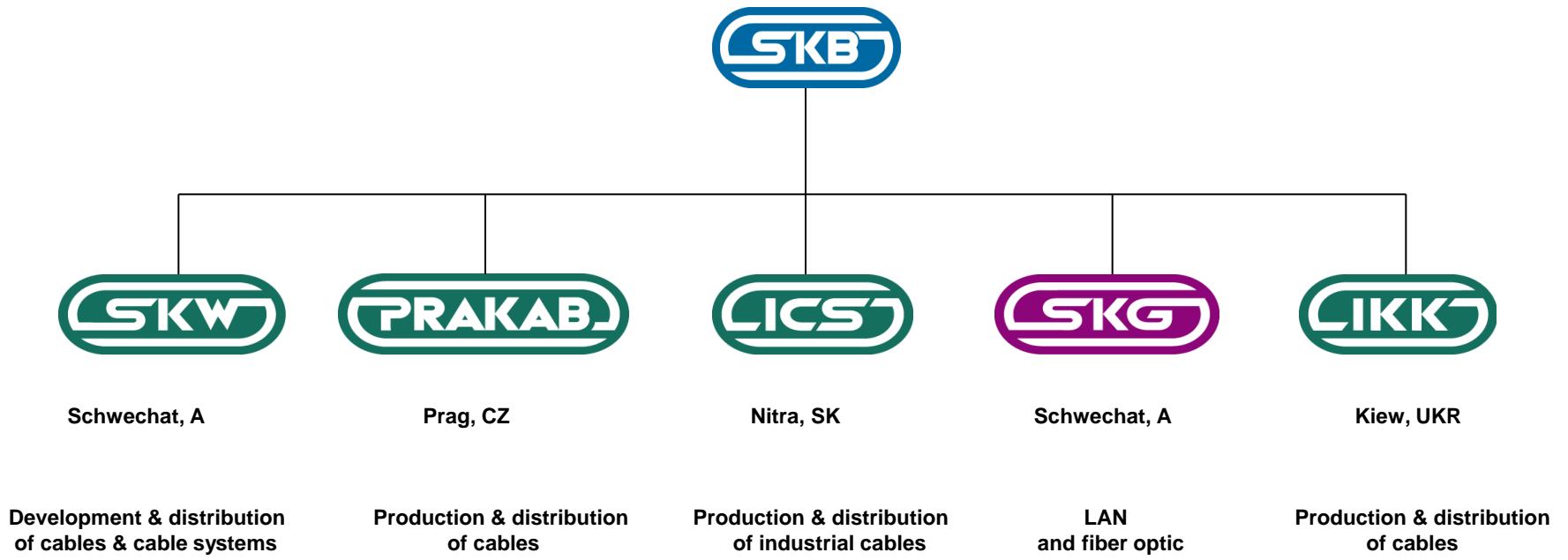




Tremmel Family



History



1891: Establishment of SKW by great-grandfather of the present owners

1908: Offices in Prague and Budapest help to secure worldwide distribution

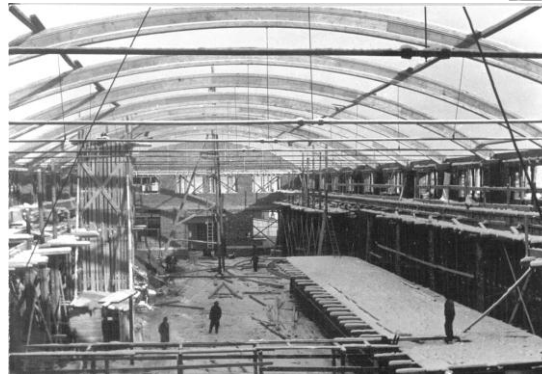
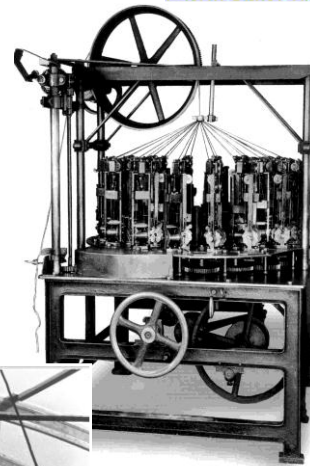


History

1921: Joint establishment of **Prazska Kabelnova a.s.** together with Dr. Emil Kolben



1939: Separation of **PRAKAB** from the **SKB – group** followed by nationalization after WWII.



1950: Reconstruction of Schwechat plant after war damage

History



1978: Establishment of SKG
(trading company for special cables)



1992: Return to the Czech Republic with
the acquisition of PRAKAB a.s.

1997: Focussing on energy cables
production at PRAKAB



2002: A wave of modernisation began at the SKW
site with the extension of warehouse space
and the redesign of the rewinding concept.



History



2003: Installation and commissioning of a testing centre and a fire laboratory for FRNC cables

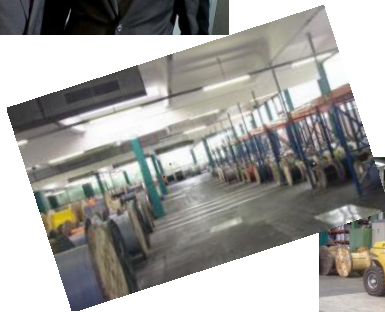


2006: Logistics capacity extended by a new rewinding line for coils of up to 14 tons



2008: Change in the SKW management

Having built up the SKB Group, Christoph and Alexander Tremmel handed over management of SKW to the new managing directors Adolf Krenn and Robert Vodnek, both long-standing SKW employees



2009/2010: Improvement and extension of the logistics capacity due to new shelving system, rewinding machine and forklift





Highlights SKW 2010

Employees:	49
Shipped products:	21.385 t
Total land:	54.000 m²
Covered Area:	27.500 m²

Activity: Development and distribution of cables and cable systems, logistics centre for Austria and neighbouring Western and South-Eastern European countries.



Customer groups

Electrical Wholesalers:

Rexel, Sonepar/Hagemeyer

Utilities:



**EVN, Tiwag, VKW, Wien Strom, Energie AG OÖ,
Steweag, Kelag, Salzburg AG...
PRE, STE, JCE, VCE, SME ...
E.On, EnBW, RWE
(as well as public utilities from: SK, H, PL, SLO)**

Contractors:

Siemens, Elin,, PKE, Dürr Cegelec, BEA, Yit, Pöyry...

Telecom, Public railways:

Telekom Austria, SPT, ÖBB, SBB ...



Product portfolio



- **Power cables and wires** **62,0%**



- **Telephone cables (indoor/outdoor)** **12,7%**

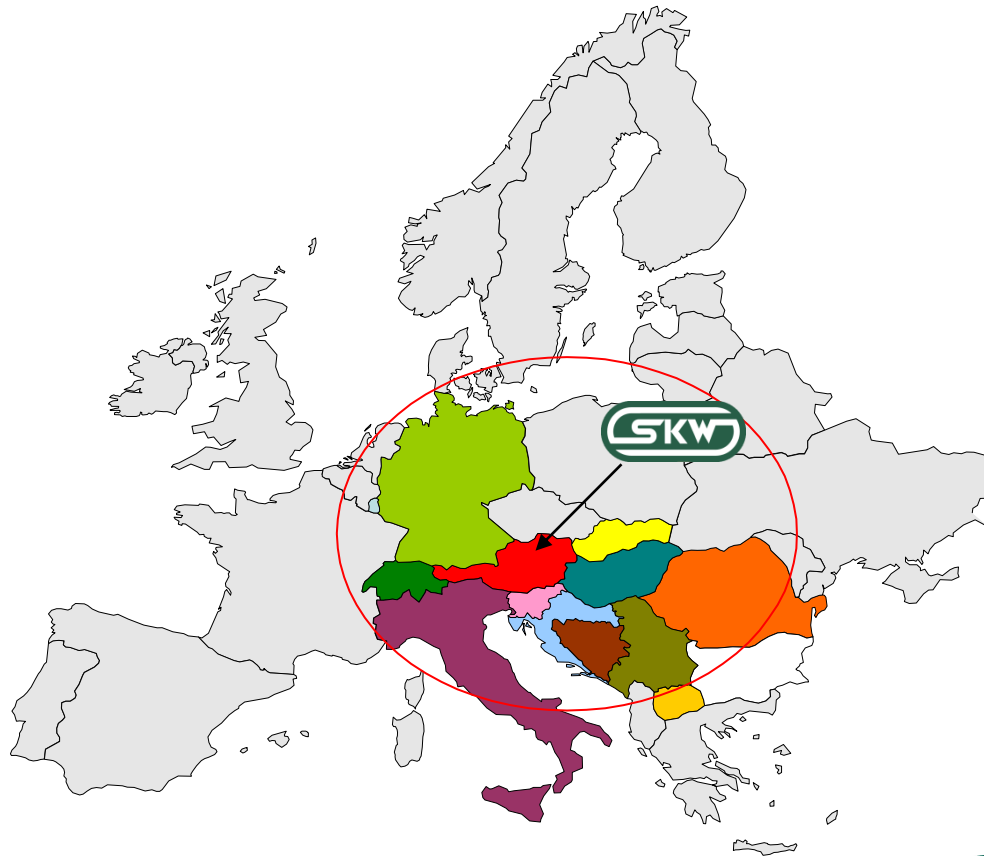


- **Installation cables** **15,4%**



- **Flexible and industrial cables** **9,7%**

Geographical position and export countries of SKW



Packaging

